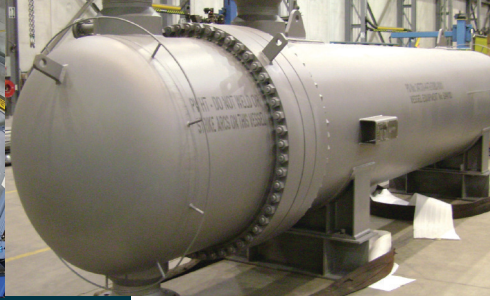


Sulphuric Acid Plant Equipment



GLOBAL INTEGRATED DELIVERY





MATERIAL CAPABILITIES

- SARAMET® 23, 35, 25, HT, HT+
- Reactive Metals (Zirconium and Titanium)
- Austenitic and Ferritic Stainless Steels (304, 316, 321, 410, 439, etc.)
- High Nickel Alloys (Hastelloy C276, 800HT, Alloy 200, Inconel 600/625, Incoloy 825, etc.)
- Low Alloys and Carbon Steel

QUALITY PROGRAM

- Fully Certified ASME Section VIII Div 1 "U" Mark and "S" Mark and CSA N285.0
- Rigorous Quality Control Procedures
- Certified NDE and Weld Technicians
- Material Segregation Procedures in Place
- Fully Certified to Perform NDE Procedures (LPI, PMI, etc.)
- Radiographic Testing
- In-house Ultrasonic Testing

WELDING CAPABILITIES

- One of the only North American shops to offer Plasma Arc Welding (PAW)
- Machine and Automatics GTAW, Manual SMAW, Machine SAW and PAW, Machine/Semi-Automatic GMAW & FCAW
- Weld Overlay
- Flushed or Projected Tube-to-Tube Sheets Joints, Strength Welded or Seal Welded

FULL SERVICE CAPABILITIES

- Engineering (Thermal, Mechanical and Corrosion)
- Project Management
- Troubleshooting
- Worldwide Procurement
- Transportation / Logistics
- Welding Engineering / Metallurgist

60+ YEARS OF INNOVATION

Worley Chemetics (Chemetics®) provides custom design and fabrication of process equipment, specializing in supporting greenfield projects as well as maintenance and turnarounds. From our modern, purpose-built facility in Pickering, Canada, we design and fabricate custom shell and tube heat exchangers, pressure vessels, towers and reactors for the petroleum, chemical, sulphuric acid and nitric acid industries worldwide. Through continuous improvement and investment in our state-of-the-art facility, our people and our processes, Worley Chemetics maintains an industry leadership position.

FABRICATION & ENGINEERING FACILITY

MARKETS

- Sulphuric Acid
- Ammonia
- Fertilizers
- Oil & Gas
- Refining
- Petrochemical
- Natural Gas
- Chemical
- Nitric Acid
- Waste-to-Energy
- Power Generation
- Pulp and Paper

PRODUCTS

- Acid Coolers (AP & SARAMET®)
- Converters (Radial Flow & CORE™)
- Radial Flow Gas-Gas Heat Exchangers
- SARAMET® HT and HT+ Boilers/Preheaters for Heat Recovery
- SARAMET® Acid Towers
- ISO-FLOW® with SWIFT-LOCK™ Acid Distributors
- SARAMET® and AP Acid Piping
- CES-ALPHA™ Systems
- Condensers and Evaporators
- Seawater Acid Coolers (CIRAMET™/CIRAMENT PLUS™)



AP Acid Cooler



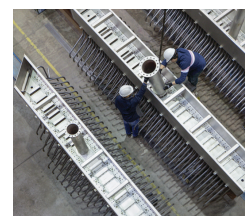
Gas-Gas Heat Exchanger



Converter



SARAMET® Tower



Acid Distributor



SARAMET® Piping



SPECIALIZED EQUIPMENT

We have the people, equipment and facilities required to complete your project within budget and on time, with an emphasis on safety and operational reliability.

OUR EQUIPMENT INCLUDES:

- Machining Center
- Plate Shears and Brakes
- CNC Lathes and Drills
- Laser and Plasma Arc Cutting Equipment
- Plate Rolls
- Tube Expansion Equipment
- Preheat / Post Weld Heat Treat (local, portable)

MANUFACTURING & WELDING CAPABILITIES

We weld, overlay and fuse many types of metals, including Tube-to-Tube sheet joints and circular or long seams.



DIVERSE INVENTORY OF MATERIALS

Our extensive inventory ensures leading delivery times.



SHOP METRICS

Our fabrication facility is approximately 80,000 sq. ft of modern manufacturing space, designed to efficiently produce custom shell and tube heat exchangers and pressure vessels.

- Weights - 100,000 kg (lift)
- Inside Diameter - 5 m-
- Length - 30 m (ship)
- Tubesheet Diameter / Thickness - 5 m / 0.8 m
- Shell / Head Thickness - Up to 75 mm
- Overhead Cranes - Total: (8) 110 t max.
- Transportation - Truck, rail, barge, air



**GET IN TOUCH
WITH OUR EXPERTS**





Delivering a more sustainable world

Protecting our people and environment's well-being is integral to the way we do business. We are committed to providing a safe, healthy and respectful world, where we look out for and support one another, and we care about the environment and the communities in which we work.

Worley Chemetics will:

- Provide our employees with the appropriate guidance, equipment and tools to work in a safe and responsible manner
- Ask, listen and respond openly to our people, contractors and customers to ensure their input is included in decisions impacting workplace health and safety, and the protection of the environments we operate within
- Encourage curiosity and learning to identify, assess and manage risks
- Promote and implement programs for the well-being of our people and for the prevention of injury and ill health
- Position ourselves, together with helping our customers and industry partners, to meet a low carbon future, and strive to manage our actions to reduce our emissions and waste
- Take considered, responsible action to drive continuous and innovative improvement objectives and outcomes in health, safety and environmental performance.

Responsibility for the application of this policy rests with us all.

Discover how we can help you

CONTACT US TO LEARN MORE



Business Development

Tel: +1 905 619 5200

chemetics.equipment@worley.com



Worley Chemetics Pickering

2001 Clements Road
Pickering, ON L1W 4C2 Canada

Worley Chemetics Vancouver

Suite 200 – 2930 Virtual Way
Vancouver, BC V5M 0A5 Canada

[WORLEY.COM/CHEMETICS](https://www.worley.com/chemetics)

© 2024 Chemetics Inc. All rights reserved.